

Case Study

AdventHealth Tampa Tampa, FL

FAST FACTS

Customer



Location

Tampa, FL

Industry

Healthcare

Applicator

Nightengale
Commercial Resurfacing
West Palm Beach, FL

Project Completion

Fall 2020



PROJECT OVERVIEW

AdventHealth Tampa is a Christian centered organization focused on whole-person health and the health of their communities.

They operate nearly 50 hospital campuses and hundreds of care sites in diverse markets throughout nine states.

As with all healthcare organizations, cleanliness is paramount. It is a challenge they face every day. Some areas of the cleaning process are more challenging than others, so for this project, they consulted with Res-Tek in order to provide a solution.

CHALLENGE

Environmental Services is responsible for cleaning the entire hospital as well as washing down and rinsing off equipment used throughout the facility. A large wash down sink allows larger equipment, such as ride on floor scrubbers, to back up closer to the drain without the worry of damaging the sink.

One of these wash down sinks was leaking due to improper drainage and waterproofing. At times it would overflow and/or sit and drain slowly. Standing water had weakened the walls as well as the base of the sink leading to deterioration in both areas.

[Continued >](#)

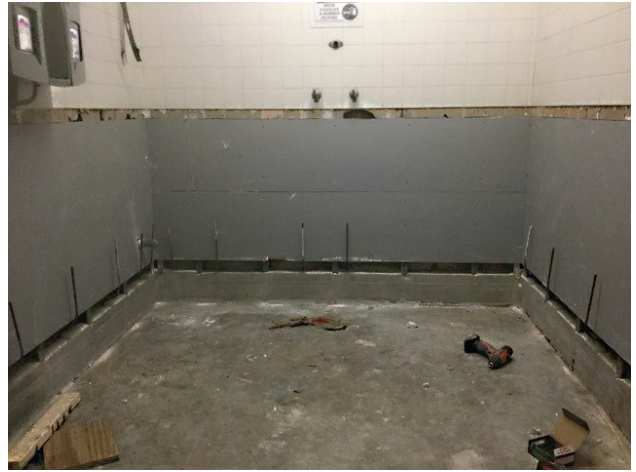
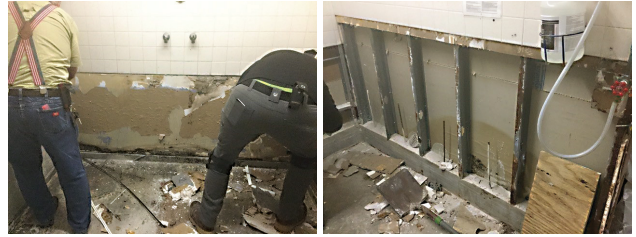
SOLUTION

Nightengale Commercial Resurfacing, a Res-Tek certified applicator, analyzed the area and determined the walls would need to be rebuilt. The most effective waterproofing creates a bathtub effect and prevents the problem from re-occurring. Res-Tek's PUR-Guard™ cementitious urethane system was selected due to it's strength, durability and ease of maintenance.

Crews began removing the old drywall and any damaged material. They then rebuilt the walls with an extended curb area inside, creating a new interior substrate that would create the needed bathtub effect and protect the walls.

New FRP panels were installed and the curbing was coated first. The remaining area was then coated and finished. The result was a functional cleaning area with proper drainage and waterproofing that would last for years to come, without causing further damage.

"We couldn't be happier with the way the project turned out," said Enrique Morales, Engineering Director. "Res-Tek and Nightengale provided more than just a coating, but a real solution to our problem."



Reconstruction of Walls



New FRP Panels & Curbing



Preconstruction (wash down area before)



Finished Wash Down Area