

## Troweled Urethane Cement System

### SYSTEM DESCRIPTION

PUR-Guard<sup>™</sup> HD-T is a 100% solid, heavy duty, 1/4"-3/8" trowel applied cementitious urethane system with sand broadcast and a matte solid color finish.

### SYSTEM BENEFITS

- Meets FDA/USDA requirements
- Withstands thermal shock up to 240°F
- High tolerance of moisture vapor transmission
- High abrasion and impact resistance
- Installs on green (10-day old) concrete
- Chemical resistant
- Matching seamless cove base for wall protection
- Designed specifically to withstand heavy impact and traffic
- Minimal maintenance costs

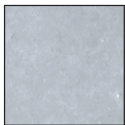
### SYSTEM COMPONENTS

**Body Coat:** HD-T Kit

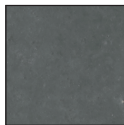
**Topcoat:** HD-TC Topcoat

### COLOR OPTIONS

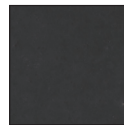
PUR-Guard systems are available in several standard color options.



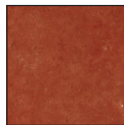
P-21 (Gray)



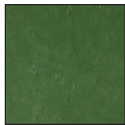
P-22 (Dark Gray)



P-23 (Black)



P-24 (Red)



P-25 (Green)



P-27 (Beige)



P-28 (Chocolate)

### PHYSICAL CHARACTERISTICS

**Compressive Strength (ASTM C-579, psi):** 5,600

**Tensile Strength (ASTM C307, psi):** 1,400

**Impact Resistance:** No visible damage at minimum 160 in./lb.

**Hardness (ASTM D-2240, Shore D):** 88

**Abrasion Resistance (ASTM D-4060, CS-17, mg):** 20-30

**Adhesion:** Exceeds the tensile/cohesive strength of concrete

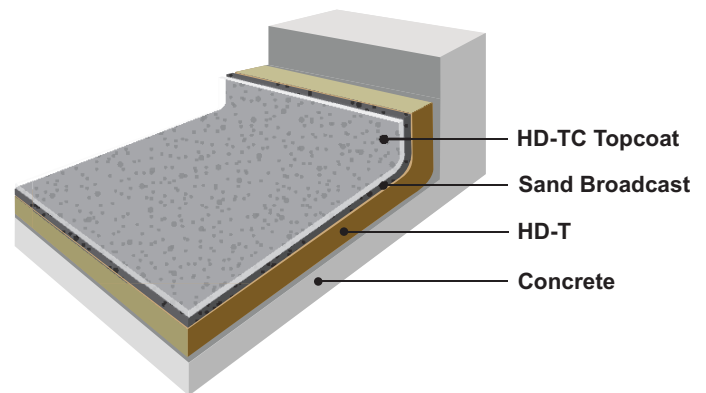
**Coefficient of Friction (ASTM D 2047):** Meets or exceeds ADA recommendations

**Water Absorption (ASTM C-413, wt.%):** < 0.1

**VOC Content (ASTM D-2369, Method E):** 0 g/l

**Cure Time:** 8-10 hrs. @ 70°F recoats/light traffic, 24 hrs. @ 70°F full service

**Installation Temperature Range:** 60°F - 80°F



## PRIMING

If concrete out-gassing occurs resulting in surface irregularities, the substrate should be primed with PUR-Guard HD-P primer. The primed area should be allowed to dry tack free before proceeding with the body coat application. Installation of a test patch may be helpful to determine if priming is necessary.

## SLIP RESISTANCE

PUR-Guard systems are slip-resistant due to the sand broadcast used. Depending on the environment, various aggregates can be added to the system to increase slip resistance to the desired level. Please consult your Res-Tek representative for more information.

## COVE BASE

All Res-Tek floor systems can include an integral 4" or 6" cove base.

## MOISTURE MITIGATION

For moisture mitigation above PUR-Guard limits, Calcium Chloride (ASTM F-1869) 20 lb/1000 sq ft./24 hrs, or 99% RH using in-situ RH probe (ASTM F-2170), additional products are required. Please consult your Res-Tek representative for more information.

## CLEANING & MAINTENANCE

Res-Tek PUR-Guard floors require little routine maintenance. However, a regular cleaning schedule will increase service life and aid in maintaining aesthetics. Please refer to the PUR-Guard Cleaning & Maintenance Guide for specific instructions.

## MIXING & APPLICATION

Please refer to the Product Data Sheets and Application Guide for specific instructions.



## PACKAGING

PUR-Guard products are sold in kits consisting of multiple components. Product properties require that containers provided are not completely filled. See price sheet for actual container weights and volumes.

## STORAGE CONDITIONS

Store material in a cool and dry place out of direct sunlight. Do not store near open flame or ignition source. Read and understand all product labels and SDS sheets prior to use.

## WARRANTY

Res-Tek Inc. warrants material for 1 year if used and stored in accordance with Res-Tek's specified application procedure. Res-Tek Inc. has no responsibility for application and processing of products. Joint issued warranties are available by request when a Res-Tek approved applicator is selected for installation.

