

RES-TEK®

Acrylic Flooring & Concrete Repair Solutions



EPO-Guard™
High Solids Epoxy Flooring

EPO-Guard™

High Solids Epoxy Flooring



EPO-Guard™ High Solids Epoxy Flooring

Res-Tek's EPO-Guard™ is an economical, high-performance system that is both functional and aesthetically pleasing. It is applied over concrete substrate creating an adhesive bond that protects your floor, transforming it into a high gloss, durable surface.

The Res-Tek Difference – Made in the USA

Res-Tek is a leading US manufacturer dedicated to the formulation and production of resin based acrylic flooring systems, cementitious urethane, epoxies, and polyaspartics. All we do is floors; and our team has over 100 years of combined experience. Our products perform consistently and have been chosen by industry leaders throughout North America.

The only things better than our products is our technical support, customer service, and training. Our flooring specialists work with you to choose the right system and oversee the project to make sure everything goes smoothly. Our network of certified applicator partners work with us to deliver an excellent finished product you can depend on for years to come.

More for Your Money

Contrary to popular belief, not all epoxies are created equal, and you want to be sure you choose the one that is right for your application. Epoxy is typically a value-driven solution, but with EPO-Guard, you get more bang for your buck.

EPO-Guard is a high solids, zero VOC, environmentally friendly epoxy. It is more durable and has improved UV resistance over other commercial grade epoxies on the market. Installers appreciate that it is user-friendly, especially on larger installations.

EPO-Guard™ is ideal for manufacturing facilities, educational institutions, healthcare, retail, automotive shops/dealerships, restrooms, break rooms, locker rooms, aircraft hangars, large industrial areas and more.



EPO-Guard Colors

Res-Tek offers 15 standard colors in the EPO-Guard line. Metallic versions are also available upon request.

Application

Res-Tek has designed EPO-Guard for use in a variety of commercial and industrial applications. There are several systems to choose from to fit your facility's environment and your budget.

Our epoxy floor coatings cure to a high gloss finish, and are available in a variety of colors, styles, and textures. You can choose to use one solid color, or broadcast colored flake or quartz for a more decorative appeal.

Once cured, EPO-Guard becomes a beautiful surface that is seamless and easy to clean. With so many customizable options, you can be assured that your floors will compliment your facility's design while meeting its specific needs for functionality.

Technical Data

EPO-Guard is a 2-component system that is mixed and applied with application thicknesses ranging from 14 mils to 1/4" thick and offers a range of chemical resistance. It can also be troweled vertically for wall and cove base applications.

Choose from a smooth high-gloss finish, orange peel, or an aggressive non-slip surface.

System Options

- EPO-CF (Colored Flake)
- EPO-CQ (Colored Quartz)
- EPO-PT (Power Trowel)
- EPO-SC (Solid Color)

Res-Tek Resist™ Antimicrobial Option

This additive can be included in any Res-Tek system, and provides added protection against microbial growth. This additional element is beneficial in areas requiring sanitized and decontaminated surfaces.

Safer for Workers

Occupational Safety and Health Administration (OSHA) regulations are more important than ever, and so is worker safety. Res-Tek flooring systems

can be customized with various grades of aggregate for the slip resistance you need to minimize potential employee accidents. Clearly defined safety zones and forklift traffic aisles can be indicated with line striping to increase hazard awareness.

EPO-Guard is a zero VOC and low odor product, making the installation process more comfortable for your staff and the environment. All Res-Tek flooring systems are VOC compliant in all 50 U.S. States.

The Res-Tek Advantage

It is important to select a supplier who has the knowledge, skill level, and expertise in both the chemistry and application of flooring products. With Res-Tek being the formulator and manufacturer, you'll have peace of mind knowing that you made the right choice for your next project.

Having partners trained in application means we don't sell our products to just anyone. Our commitment to a trained applicator network guarantees the highest level of quality and consistency, giving you confidence that your floor will last for many years.

Res-Tek is ready to work with you to design a system tailored to the individual needs of your facility. Contact us for further information at 1-888-ResTek1, or visit our web site at www.Res-Tek.net to find your nearest Regional Manager.

EPO-Guard™ Benefits

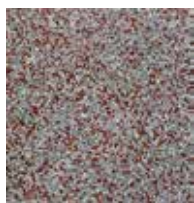
- Economical for larger areas
- Low odor
- Durable and abrasion resistant
- Low maintenance
- Customizable slip resistance
- Chemical resistance
- Nonporous
- Seamless
- VOC compliant



Colored Quartz Blends



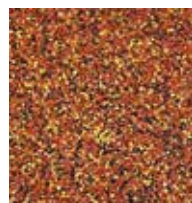
EPO-CQ Blend #1



EPO-CQ Blend #2



EPO-CQ Blend #3



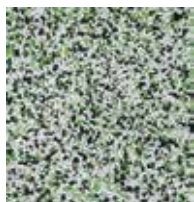
EPO-CQ Blend #4



EPO-CQ Blend #5



EPO-CQ Blend #6



EPO-CQ Blend #7



EPO-CQ Blend #8

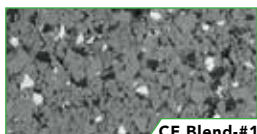


EPO-CQ Blend #9



EPO-CQ Blend #10

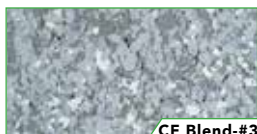
Colored Flake Blends



CF Blend-#1



CF Blend-#2



CF Blend-#3



CF Blend-#4



CF Blend-#5



CF Blend-#6



CF Blend-#7



CF Blend-#8



CF Blend-#9



CF Blend-#10

Liquid Pigments



Pearl Gray (LP-1)



Storm Gray (LP-2)



Steel Gray (LP-3)



Battleship Gray (LP-4)



Tan (LP-5)



Natural Beige (LP-6)



Khaki (LP-7)



Graphite Blue (LP-8)



Sky Blue (LP-9)



Ocean Blue (LP-10)



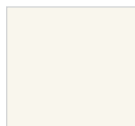
Evergreen (LP-11)



Safety Yellow (LP-12)



Safety Red (LP-13)



True White (LP-14)



True Black (LP-15)

The limitations of process printing do not allow exact color reproductions. Contact Res-Tek for physical samples, which are the best guide for final color and texture selection. Colored quartz is available in a variety of sizes upon request.